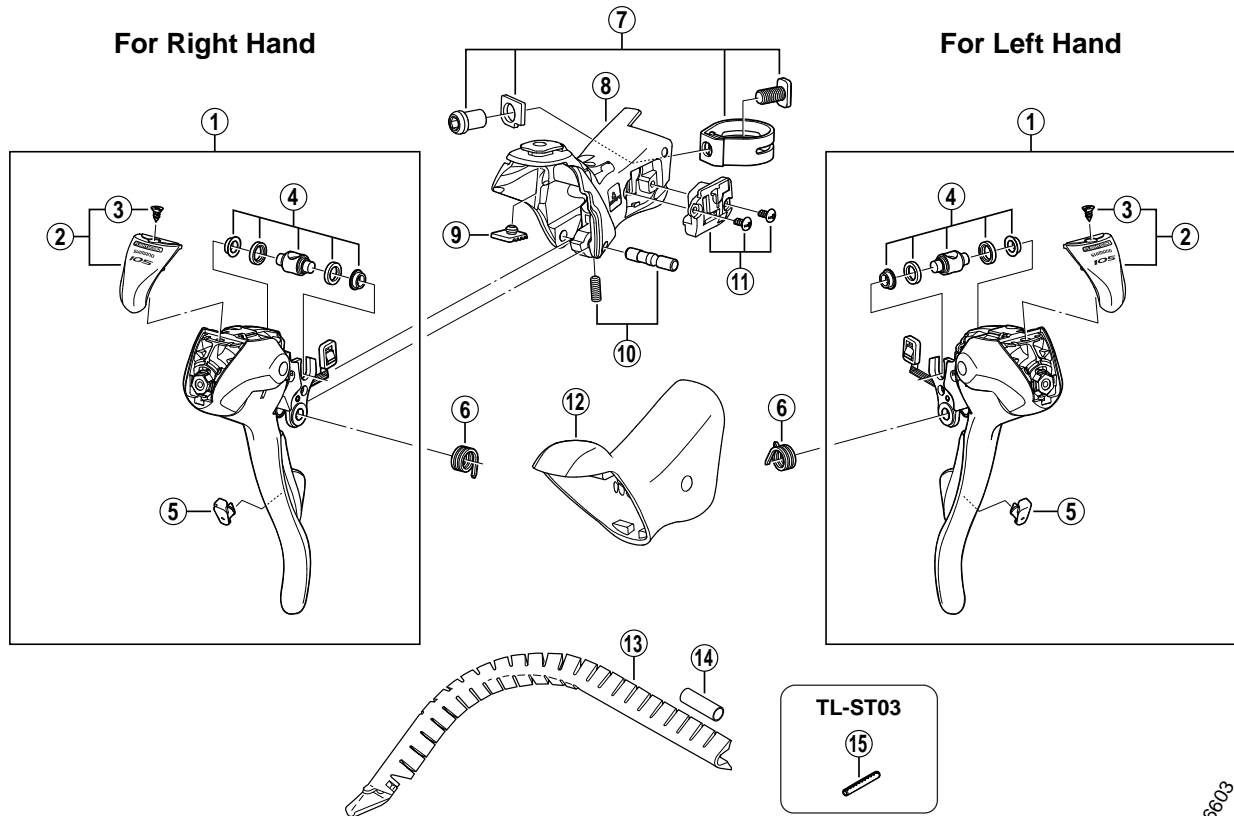


SHIMANO 105 Dual Control Lever (FLIGHT DECK Compatible)

ST-5600 Silver Version

ST-5600-L Black Version



ST-6600/6603
ST-5510

ITEM NO.	SHIMANO CODE NO.	DESCRIPTION	INTERCHANGEABILITY
*	1	Y-6KD98010 R.H. Main Lever Assembly (Silver) for ST-5600	
		Y-6RR98010 R.H. Main Lever Assembly (Black) for ST-5600-L	
*	1	Y-6KD98020 L.H. Main Lever Assembly (Silver) for ST-5600	
		Y-6RR98020 L.H. Main Lever Assembly (Black) for ST-5600-L	
*	2	Y-6KD98030 Name Plate for ST-5600 & Fixing Screw	
		Y-6RR98030 Name Plate for ST-5600-L & Fixing Screw	
3	Y-6K2 19000	Name Plate Fixing Screw	A
4	Y-6BD98110	Cable Hook Unit	A A
5	Y-6KD05000	R.H. Release Lever Support	
	Y-6KD55000	L.H. Release Lever Support	
6	Y-6K2 87000	R.H. Return Spring	A
	Y-6K2 87100	L.H. Return Spring	A
7	Y-6K2 98060	Clamp Band Unit (φ 23.8 mm – φ 24.2 mm)	A
8	Y-6KD98040	R.H. Bracket	B
	Y-6KD98050	L.H. Bracket	B
9	Y-6K2 50000	Bump Rubber (1.45 mm)	A
	Y-6K2 50010	Bump Rubber (1.60 mm)	A
	Y-6K2 50020	Bump Rubber (1.85 mm)	A
10	Y-6KD98060	Lever Axle & Fixing Screw	B
11	Y-6JA 98080	R.H. Water-Proof Cap & Fixing Screws (M2.6 x 6)	A
	Y-6JA 98090	L.H. Water-Proof Cap & Fixing Screws (M2.6 x 6)	A
12	Y-6K2 98100	Bracket Covers (Pair)	A
13	Y-86B 90010	Outer Cable Guide	A A
14	Y-877 11000	Outer Cable Joint	A A
15	Y-130 03200	Return Spring Installation Tool (TL-ST03)	A

A: Same parts.

B: Parts are usable, but differ in materials, appearance, finish, size, etc.

Absence of mark indicates non-interchangeability.

0804-2441A

Specifications are subject to change without notice.

SHIMANO